

# Introducing the **Soteria<sup>®</sup>** **Mattress Barrier**

---



---

## ***Soteria Mattress Barrier***

*Protecting infants in incubators, warmers, and bassinets.*

---



BED & MATTRESS BARRIERS

TRINITY  GUARDION

# Why the Soteria® Mattress Barrier Matters

## Facts

- **Mattresses are hidden reservoirs** — microbial contamination persists even after cleaning.
- **Infants are highly vulnerable** — immature immune systems, fragile skin, invasive devices, and longer stays increase infection risk.
- **Cross-contamination drives Healthcare Associated Infections (HAIs)** — outbreaks have been traced to contaminated infant mattresses and surfaces.
- **Harsh disinfectants** — may cause mattress damage.

## Clinical Evidence

- **Mattresses are persistent reservoirs** — contamination documented even after cleaning.<sup>1</sup>
- **Contaminated mattresses** linked to infection risk in neonatal units.<sup>2</sup>
- **Environmental strains on incubator mattresses** matched neonatal isolates from late-onset sepsis cases.<sup>3</sup>



1. Reboux C, et al. Disinfection of incubators in neonatal intensive care units: Impact of steam pulverization on bacterial contamination. *Antimicrobial Resistance & Infection Control*. 2023;12: 15.

2. Chavignon, M., Reboux, M., Tasse, J. et al. Persistent microbial contamination of incubators despite disinfection. *Pediatric Res* 90, 1215–1220 (2021).

3. Menezes RP, et al. Inanimate surfaces and air contamination with multidrug-resistant species of *Staphylococcus* in the NICU environment. *Microorganisms*. 2022;10(3):567.

# Soteria® Mattress Barrier At-a-Glance

## Protection

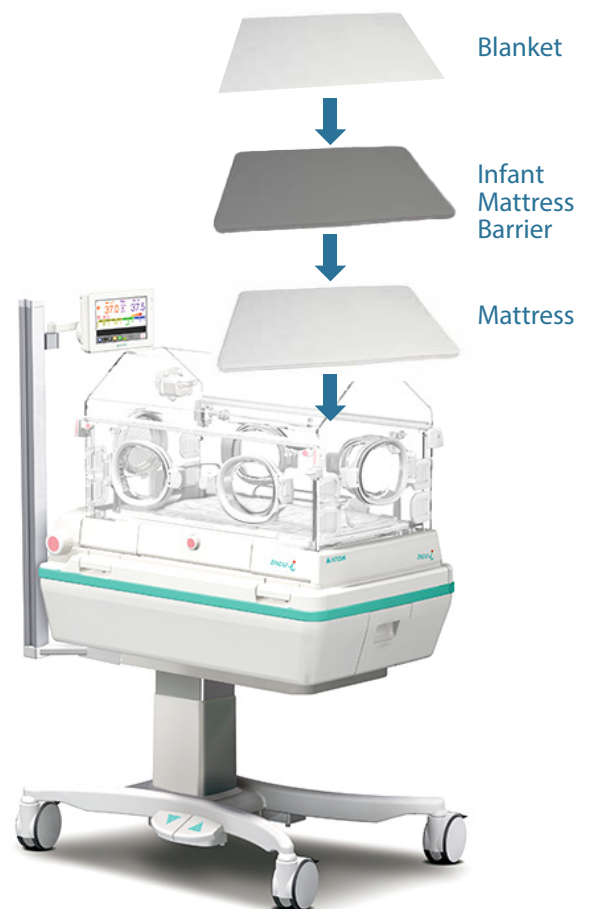
- **Fitted barrier** — covers the mattress like a fitted sheet.
- **Protective shield** — impervious to fluids and microbes.
- **Supports infection prevention** — reduces microbial transmission risk by maintaining a clean surface.

## Patient Safety

- **Gentle and safe** — non-irritating, latex-free, non-toxic.
- **X-ray compatible** — maintains clear, artifact-free imaging.
- **FDA 510(k)-cleared** medical device.

## Efficiency and Validation

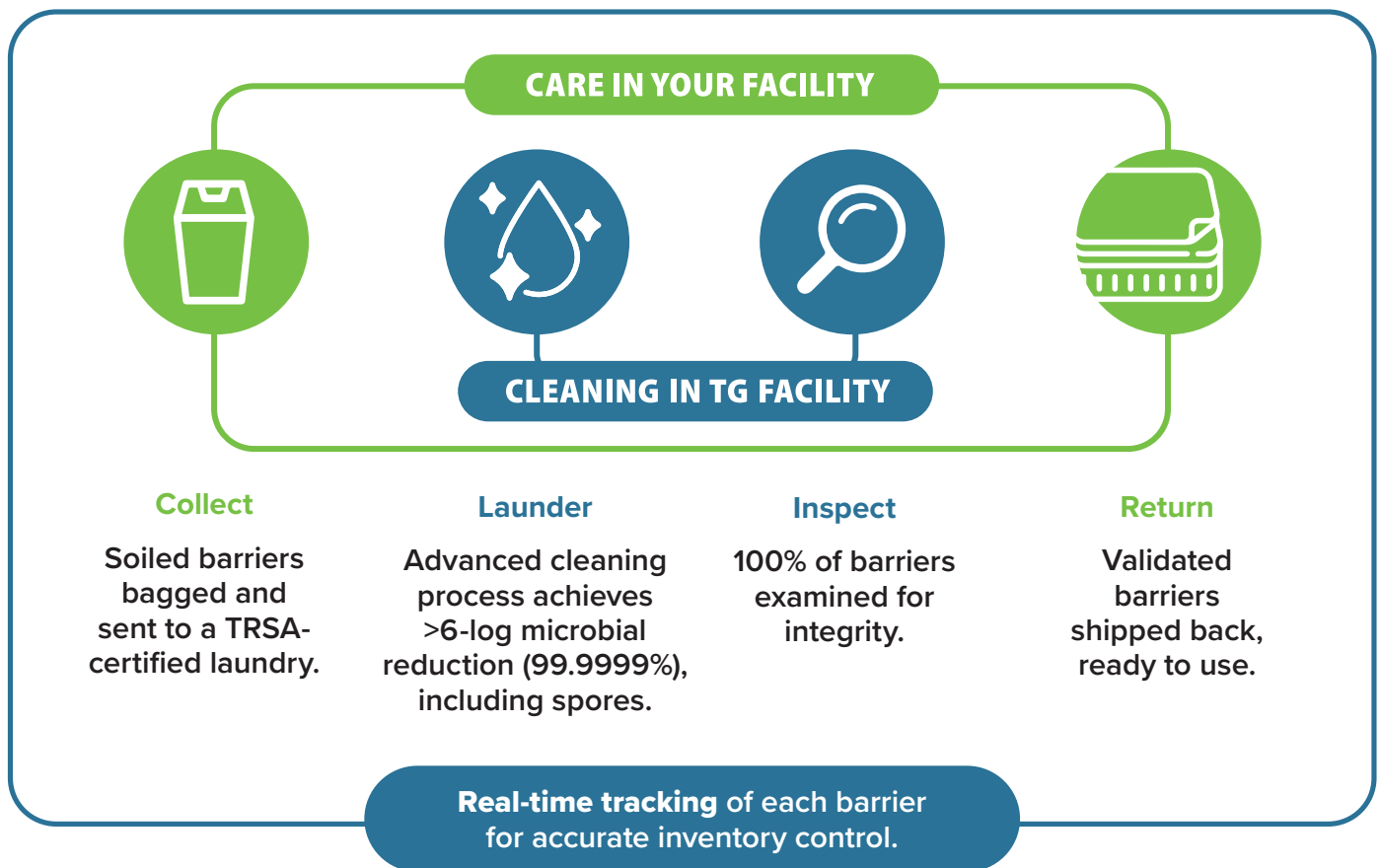
- **Validated laundering process** — maintains integrity and achieves >6-log microbial reduction (99.9999%), including *C. difficile* spores.
- **Streamlined workflow** — simplifies mattress cleaning and disinfection.
- **Inventory control**— RFID tracking for barriers.



### Customized Fit for Each Manufacturer's Device



# How the Soteria® Barrier Process Works



**Only Soteria provides a validated, reusable mattress barrier that ensures the cleanest surface for your infants.**



**TRINITY GUARDION**

4 South Park Ave Batesville, IN 47006

P: 812-932-2601 • F: 812-932-2604

info@trinityguardion.com • www.TrinityGuardion.com.



See [www.trinityguardion.com/patents](http://www.trinityguardion.com/patents) for patent information